

# MONOCLE

A BRIEFING ON GLOBAL AFFAIRS, BUSINESS, CULTURE & DESIGN

page 158

E

TRAVEL EDITS  
Global



## Moving on up Global

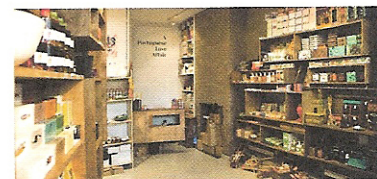
### Preface

Whether it's slow-food excellence in Milan, the fast life of a rockstar in Mexico, or a little slice of Portugal in the heart of London, we take a global trip through the destinations shaping travel for 2014.



### The Norman Tel Aviv

The latest hotel to open on Tel Aviv's King Albert Square is The Norman, a property made up of two 1920s Bauhaus buildings refurbished by Yoav Messer's architectural studio. The result is a 50-room building with two penthouses and an al fresco dining room serving Mediterranean fare. There's also rooftop dining with panoramic views of the White City. — JD  
[thenorman.com](http://thenorman.com)



### A Portuguese Love Affair London

A Portuguese Love Affair on London's Columbia Road was opened in August 2013 by Portuguese childhood friends Dina Martins and Olga Cruchinho (pictured above). The little shop showcases their home through its vibrant Made-in-Portugal stock of both traditional and new products such as Bordallo Pinheiro porcelain and colourfully packaged tinned fish from Conserveira de Lisboa. "We are a country of artisans. Due to the crisis, there's a boom in Portuguese creativity," says Cruchinho. — AK  
142 Columbia Road  
+44 782 701 8308

